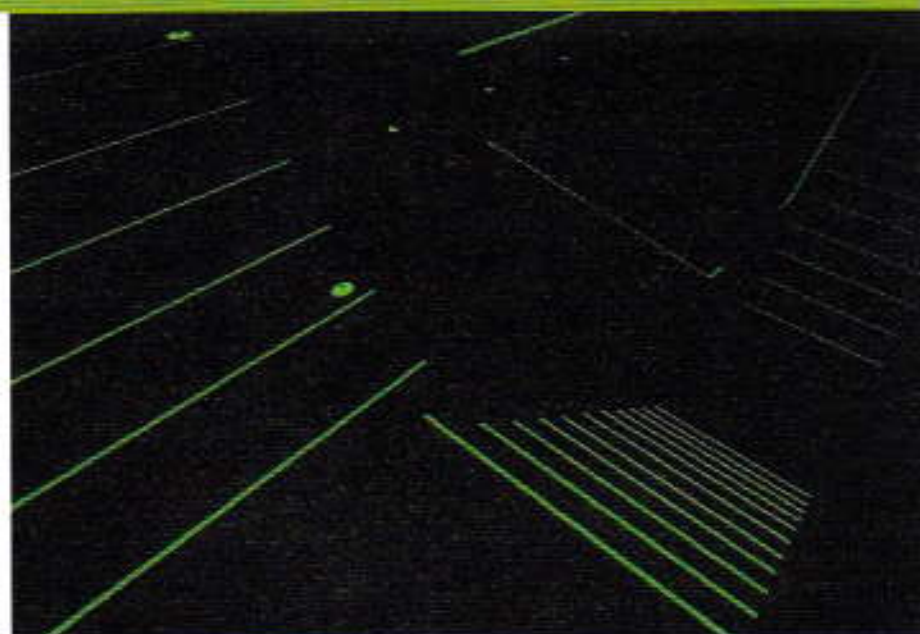


 **ecoglo**
VISIBLY BETTER



Photoluminescent Step Edge and Path Marking Systems





**Marina Bay
Multi Purpose Facility
Products: E2071**

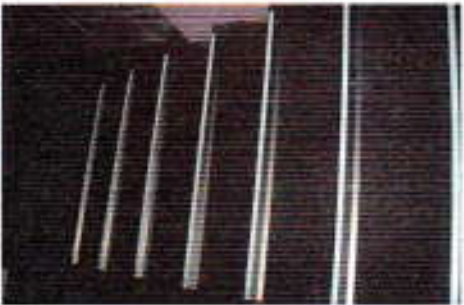




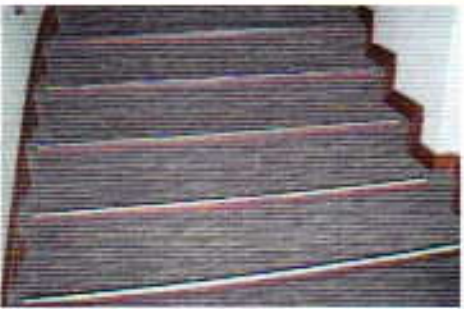
**Starhub Auditorium
C4171**



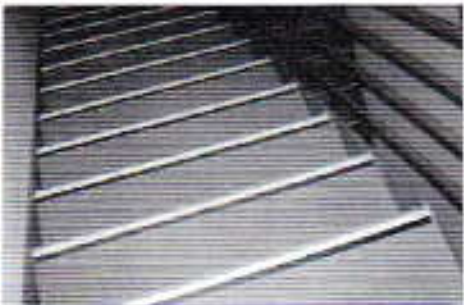
**INSEAD
Product: F4171**



**Home of Singapore
Repertory Theatre
Product: F5101**



**Esplanade
Product E6071**



**Singapore Supreme Court
Product: E2071**



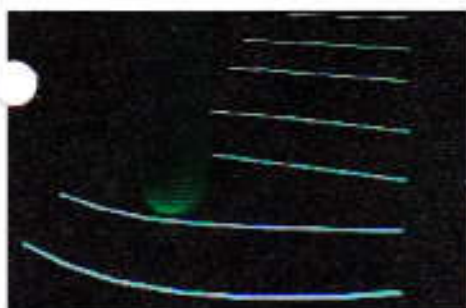
**NTU Admin Block
Car Park
Products: F5101**



**Nanyang
Executive Centre,
NTU
Products: F4171**



**St John's - St Margaret's
Church
Products: F5101**



**BCA Academy
Products: F4171**



**Pinnacle @
Duxton
Products: E2071**



**AMI Stadium
Christchurch, NZ**



**Gwinnett Center
Duluth, Georgia**



**Northern Illinois University
Convocation Center**



**John Paul Jones Arena
University of Virginia**



**Hong Kong
Convention Centre**



**Ikea Home Store
Perth, WA, Australia**



**Melbourne Cricket Ground
Melbourne, Australia**



**Telstra Dome
Melbourne, Australia**



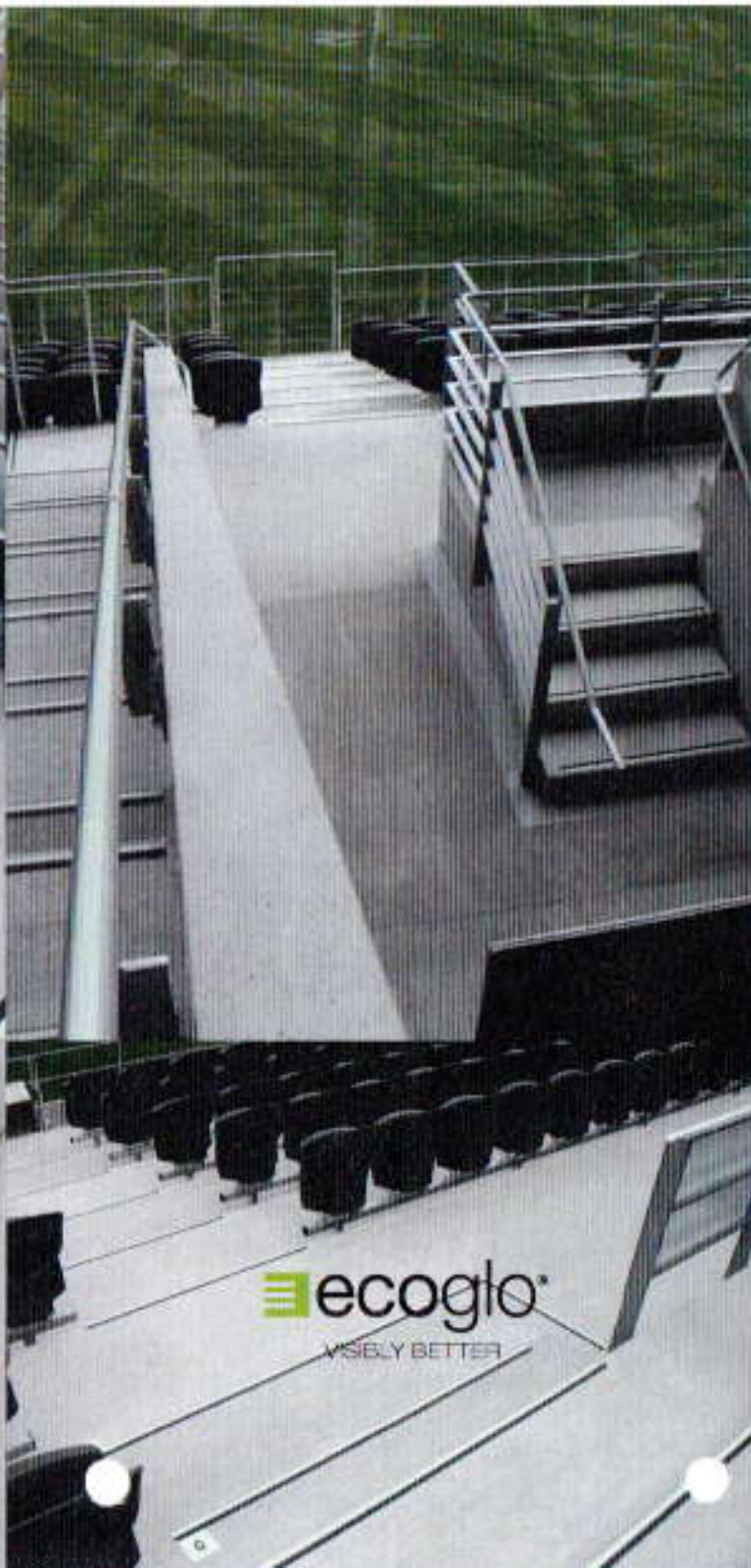
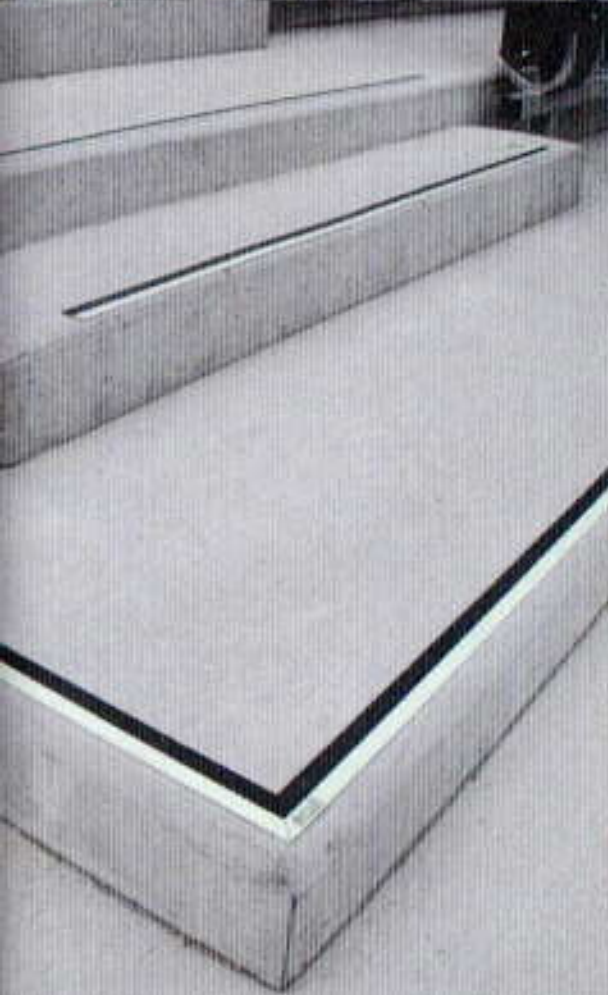
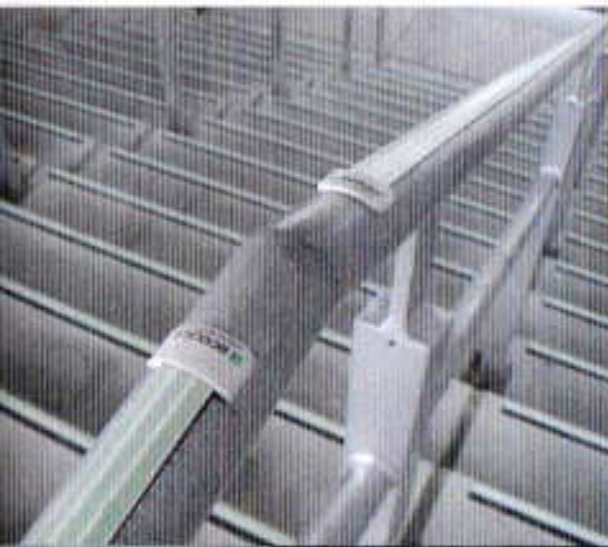
**Melbourne Sports &
Aquatic Centre
Melbourne, Australia**



**Vector Arena
Auckland, NZ**



**QE2 Aquatic Centre
Christchurch, NZ**



 ecoglo®
WISELY BETTER

 **ecoglo** | VISIBLY BETTER

24 HOUR STEP CONTRAST

Whether you want to define the edge of one step or provide safe and efficient access for thousands, Ecoglo has a solution.

Using advanced photoluminescent technology Ecoglo products are visible 24 hours a day.

The Ecoglo range of step edge, path making and signage products is a proven long lasting solution to the safe movement of people.

These products and systems have been installed worldwide aiding egress and preventing falls in buildings large and small.



www.ecoglo.sg